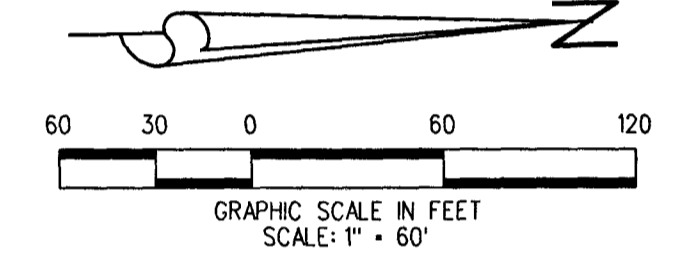
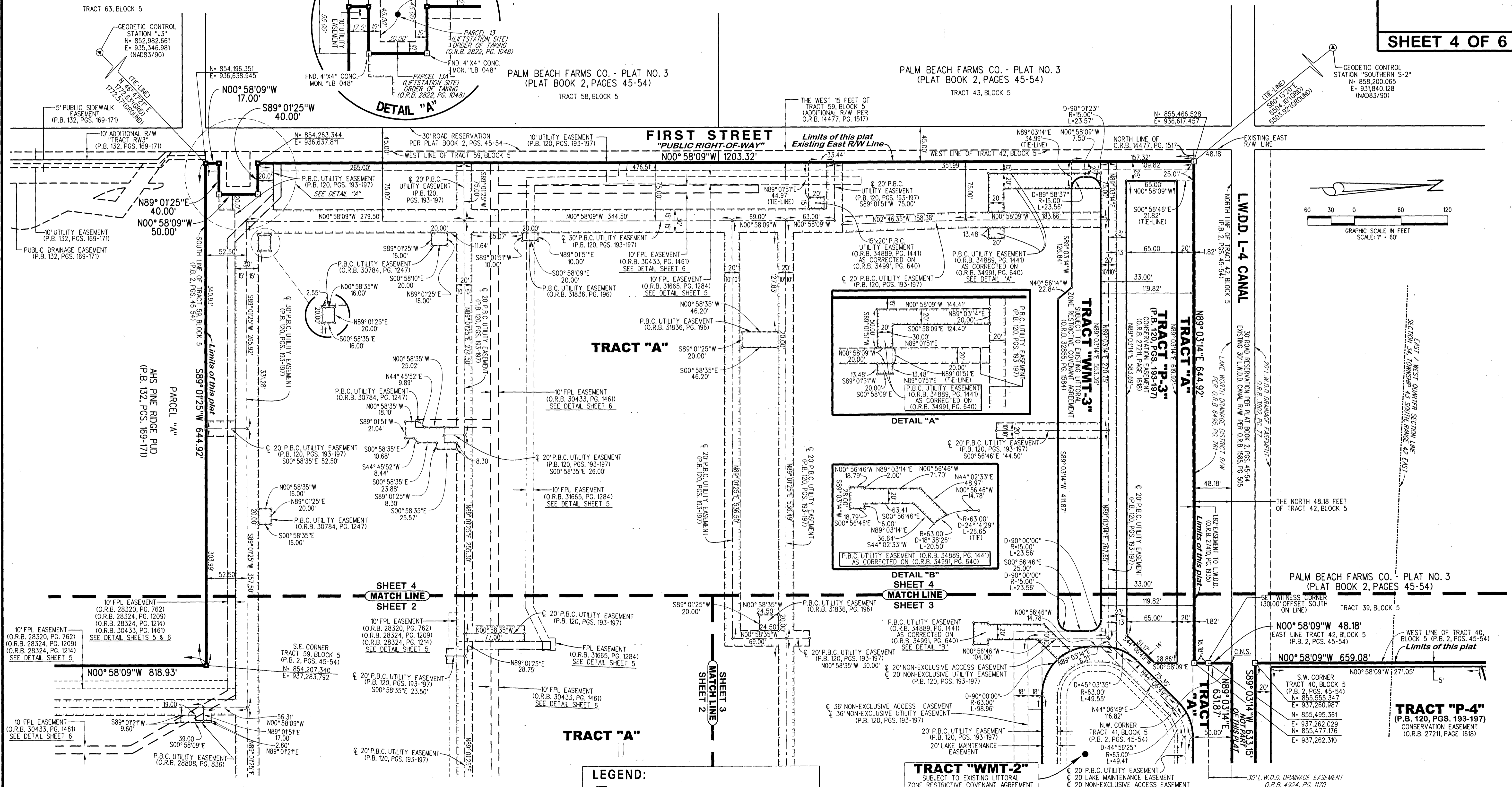
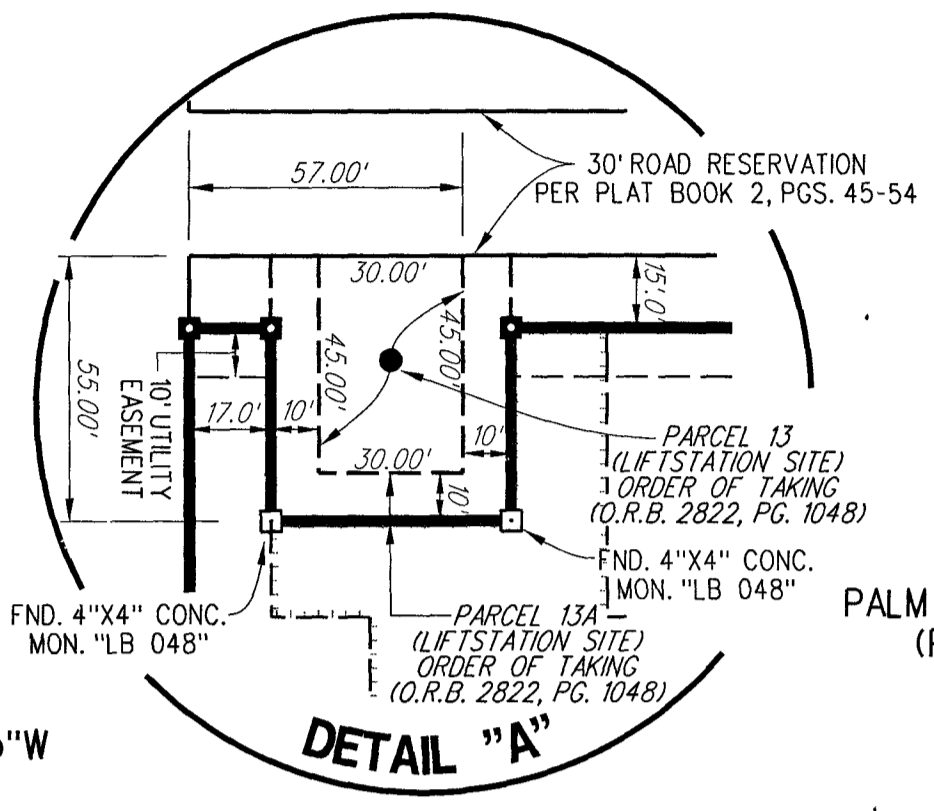
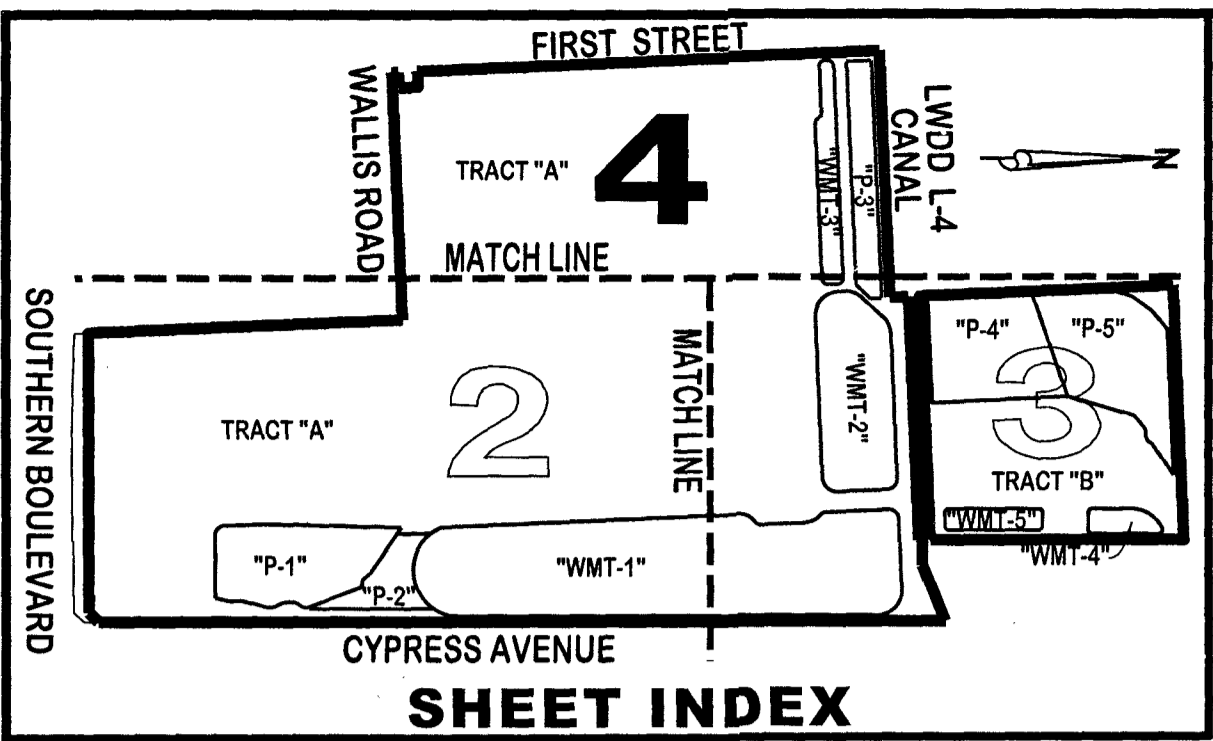


LIBERTY AIRPORT CENTER, A M.U.P.D.

BEING A REPLAT OF A PORTION OF THE PLAT OF SOUTHERN LIGHT INDUSTRIAL PARK, A M.U.P.D.,
RECORDED IN PLAT BOOK 120 PAGES 193 THROUGH 197, PUBLIC RECORDS OF PALM BEACH COUNTY, FLORIDA,
LYING IN SECTION 34, TOWNSHIP 43 SOUTH, RANGE 42 EAST, PALM BEACH COUNTY, FLORIDA



THIS INSTRUMENT WAS PREPARED BY DAVID C. LIDBERG, P.S.M., IN AND FOR THE OFFICES OF LIDBERG LAND SURVEYING, INC., 675 WEST INDIANTOWN ROAD, SUITE 200, JUPITER, FLORIDA 33458. TELEPHONE (561) 746-8454.

PLAT POSITION AND ORIENTATION:
• COORDINATES SHOWN HEREON ARE GRID AND ARE BASED ON THE NATIONAL GEODETIC SURVEY, FLORIDA STATE PLANE TRANSVERSE MERCATOR PROJECTION.
• DISTANCES SHOWN HEREON ARE GRID DISTANCES UNLESS OTHERWISE NOTED.
• DATUM = NORTH AMERICAN DATUM OF 1983 (NAD83), 1990 ADJUSTMENT
• ZONE = FLORIDA EAST
• LINEAR UNITS = US SURVEY FOOT
• SCALE FACTOR = 1.000032316
• GROUND DISTANCES X SCALE FACTOR = GRID DISTANCE

LEGEND:
■ = DENOTES SET PERMANENT REFERENCE MONUMENT. SET 4"x4" CONCRETE MONUMENT WITH DISK STAMPED "PRM LB4431"
□ = DENOTES FOUND PERMANENT REFERENCE MONUMENT. FOUND 4"x4" CONCRETE MONUMENT WITH DISK STAMPED "PRM LB4431"
--- = DENOTES LIMITS OF PALM BEACH COUNTY UTILITY EASEMENT

TRACT "WMT-2"
SUBJECT TO EXISTING LITTORAL ZONE RESTRICTIVE COVENANT AGREEMENT (O.R.B. 32855, PG. 1584)

LIDBERG LAND SURVEYING, INC.
LB4431 675 West Indiantown Road, Suite 200, Jupiter, Florida 33458 TEL: 561-746-8454

CAD.	K:\JUST \ 344342 \ 12-0598-306A \ 12-0598-306A.DGN		
REF.			
FLO.	FB.	PG.	JOB 12-0598-306A
OFF.	R.J.W.		DATE JANUARY 2024
CKD.	D.C.L.	SHEET 4 OF 6	DWG. 012-0598P